

ORIGINAL INVESTIGATIONS

# Age-Related Variations in Takotsubo Syndrome



Victoria L. Cammann, MD,<sup>a,\*</sup> Konrad A. Szawan, MD,<sup>a,\*</sup> Barbara E. Stähli, MD,<sup>a</sup> Ken Kato, MD, PhD,<sup>a</sup> Monika Budnik, MD, PhD,<sup>b</sup> Manfred Wischniewsky, PhD,<sup>c</sup> Sara Dreiding, MD,<sup>a</sup> Rena A. Levinson, BSc,<sup>a</sup> Davide Di Vece, MD,<sup>a</sup> Sebastiano Gili, MD,<sup>d</sup> Rodolfo Citro, MD, PhD,<sup>e</sup> Eduardo Bossone, MD, PhD,<sup>f</sup> Michael Neuhaus, MD,<sup>g</sup> Jennifer Franke, MD,<sup>h</sup> Benjamin Meder, MD,<sup>h</sup> Miłosz Jaguszewski, MD, PhD,<sup>i</sup> Michel Noutsias, MD,<sup>j</sup> Maike Knorr, MD,<sup>k</sup> Susanne Heiner, MD,<sup>k</sup> Fabrizio D'Ascenzo, MD, PhD,<sup>l</sup> Wolfgang Dichtl, MD, PhD,<sup>m</sup> Christof Burgdorf, MD,<sup>n</sup> Behrouz Kherad, MD,<sup>o</sup> Carsten Tschöpe, MD,<sup>o</sup> Annahita Sarcon, MD,<sup>p</sup> Jerold Shinbane, MD,<sup>q</sup> Lawrence Rajan, MD,<sup>r</sup> Guido Michels, MD,<sup>s</sup> Roman Pfister, MD,<sup>s</sup> Alessandro Cuneo, MD,<sup>t</sup> Claudius Jacobshagen, MD,<sup>u</sup> Mahir Karakas, MD,<sup>v,w</sup> Wolfgang Koenig, MD,<sup>x,y</sup> Alexander Pott, MD,<sup>z</sup> Philippe Meyer, MD,<sup>aa</sup> Marco Roffi, MD,<sup>aa</sup> Adrian Banning, MD,<sup>bb</sup> Mathias Wolfrum, MD,<sup>cc</sup> Florim Cuculi, MD,<sup>dd</sup> Richard Kobza, MD,<sup>dd</sup> Thomas A. Fischer, MD,<sup>ee</sup> Tuija Vasankari, MD,<sup>ff</sup> K.E. Juhani Airaksinen, MD, PhD,<sup>ff</sup> L. Christian Napp, MD,<sup>gg</sup> Rafal Dworakowski, MD,<sup>hh</sup> Philip MacCarthy, MD, PhD,<sup>hh</sup> Christoph Kaiser, MD,<sup>ii</sup> Stefan Osswald, MD,<sup>ii</sup> Leonarda Galiuto, MD, PhD,<sup>jj</sup> Christina Chan, MD,<sup>kk</sup> Paul Bridgman, MD,<sup>kk</sup> Daniel Beug, MD,<sup>ll,mm</sup> Clément Delmas, MD,<sup>nn</sup> Olivier Lairez, MD, PhD,<sup>nn</sup> Ekaterina Gilyarova, MD,<sup>oo</sup> Alexandra Shilova, MD, PhD,<sup>oo</sup> Mikhail Gilyarov, MD, PhD,<sup>oo</sup> Ibrahim El-Battrawy, MD,<sup>pp,qq</sup> Ibrahim Akin, MD,<sup>pp,qq</sup> Karolina Poledniková, MD,<sup>rr</sup> Petr Toušek, MD, PhD,<sup>rr</sup> David E. Winchester, MD,<sup>ss</sup> Jan Galuszka, MD, PhD,<sup>tt</sup> Christian Ukena, MD,<sup>uu</sup> Gregor Poglajen, MD, PhD,<sup>vv</sup> Pedro Carrilho-Ferreira, MD,<sup>ww</sup> Christian Hauck, MD,<sup>xx</sup> Carla Paolini, MD,<sup>yy</sup> Claudio Bilato, MD, PhD,<sup>yy</sup> Yoshio Kobayashi, MD, PhD,<sup>zz</sup> Toshihiro Shoji, MD, PhD,<sup>aaa</sup> Iwao Ishibashi, MD, PhD,<sup>aaa</sup> Masayuki Takahara, MD, PhD,<sup>bbb</sup> Toshiharu Himi, MD, PhD,<sup>bbb</sup> Jehangir Din, MD,<sup>ccc</sup> Ali Al-Shammari, MD,<sup>ccc</sup> Abhiram Prasad, MD,<sup>ddd</sup> Charanjit S. Rihal, MD,<sup>ddd</sup> Kan Liu, MD, PhD,<sup>eee</sup> P. Christian Schulze, MD,<sup>fff</sup> Matteo Bianco, MD,<sup>ggg</sup> Lucas Jörg, MD,<sup>hhh</sup> Hans Rickli, MD,<sup>hhh</sup> Gonçalo Pestana, MD,<sup>iii</sup> Thanh H. Nguyen, MD, PhD,<sup>jjj</sup> Michael Böhm, MD,<sup>uu</sup> Lars S. Maier, MD,<sup>xx</sup> Fausto J. Pinto, MD, PhD,<sup>ww</sup> Petr Widimský, MD, PhD,<sup>rr</sup> Stephan B. Felix, MD,<sup>ll,mm</sup> Ruediger C. Braun-Dullaeus, MD,<sup>cc</sup> Wolfgang Rottbauer, MD,<sup>z</sup> Gerd Hasenfuß, MD,<sup>u</sup> Burkert M. Pieske, MD,<sup>o,kkk</sup> Heribert Schunkert, MD,<sup>xx,yy</sup> Martin Borggrefe, MD,<sup>pp,qq</sup> Holger Thiele, MD,<sup>lll</sup> Johann Bauersachs, MD,<sup>gg</sup> Hugo A. Katus, MD,<sup>h</sup> John D. Horowitz, MBBS, PhD,<sup>jjj</sup> Carlo Di Mario, MD, PhD,<sup>mmm</sup> Thomas Münzel, MD,<sup>k</sup> Filippo Crea, MD,<sup>jj</sup> Jeroen J. Bax, MD, PhD,<sup>nnn</sup> Thomas F. Lüscher, MD,<sup>ooo,ppp</sup> Frank Ruschitzka, MD,<sup>a</sup> Jelena R. Ghadri, MD,<sup>a</sup> Grzegorz Opolski, MD, PhD,<sup>b,\*</sup> Christian Templin, MD, PhD<sup>a,\*</sup>

From the <sup>a</sup>University Heart Center, Department of Cardiology, University Hospital Zurich, Zurich, Switzerland; <sup>b</sup>Department of Cardiology, Medical University of Warsaw, Warsaw, Poland; <sup>c</sup>FB Mathematics and Computer Science, University of Bremen, Bremen, Germany; <sup>d</sup>Centro cardiologico Monzino, IRCCS, Milan, Italy; <sup>e</sup>Heart Department, University Hospital "San Giovanni di Dio e Ruggi d'Aragona," Salerno, Italy; <sup>f</sup>Division of Cardiology, "Antonio Cardarelli" Hospital, Naples, Italy; <sup>g</sup>Department of Cardiology, Kantonsspital Frauenfeld, Frauenfeld, Switzerland; <sup>h</sup>Department of Cardiology, Heidelberg University Hospital, Heidelberg, Germany; <sup>i</sup>First Department of Cardiology, Medical University of Gdansk, Gdansk, Poland; <sup>j</sup>Mid-German Heart Center, Department of Internal Medicine III, Division of Cardiology, Angiology and Intensive Medical Care, University Hospital Halle, Martin-Luther-University Halle-Wittenberg, Halle (Saale), Germany; <sup>k</sup>Center for Cardiology, Cardiology 1, University Medical Center Mainz, Mainz, Germany; <sup>l</sup>Division of Cardiology, Department of Medical Sciences, AOU Città della Salute e della Scienza, University of Turin, Turin, Italy; <sup>m</sup>University Hospital for Internal Medicine III (Cardiology and Angiology), Medical University Innsbruck, Innsbruck, Austria; <sup>n</sup>Heart and Vascular Centre Bad Bevensen, Bad Bevensen, Germany; <sup>o</sup>Department of Cardiology, Charité, Campus Rudolf Virchow, Berlin, Germany; <sup>p</sup>Section of Cardiac Electrophysiology, Department of Medicine, University of California-San Francisco, San Francisco, California; <sup>q</sup>University of Southern California, Keck School of Medicine, Los Angeles, California; <sup>r</sup>TJ Health Partners Heart and Vascular, Glasgow, Kentucky; <sup>s</sup>Department of Internal Medicine III, Heart Center University of Cologne, Cologne, Germany; <sup>t</sup>Krankenhaus "Maria Hilfr" Medizinische Klinik, Stadtlohn, Germany; <sup>u</sup>Clinic for Cardiology and Pneumology, Georg August University Goettingen, Goettingen, Germany; <sup>v</sup>Department of General and Interventional Cardiology, University Heart Center Hamburg, Hamburg, Germany; <sup>w</sup>DZHK (German Centre for Cardiovascular Research), partner site



Listen to this manuscript's audio summary by Editor-in-Chief Dr. Valentin Fuster on JACC.org.

**ABSTRACT**

**BACKGROUND** Takotsubo syndrome (TTS) occurs predominantly in post-menopausal women but is also found in younger patients.

**OBJECTIVES** This study aimed to investigate age-related differences in TTS.

**METHODS** Patients diagnosed with TTS and enrolled in the International Takotsubo Registry between January 2011 and February 2017 were included in this analysis and were stratified by age (younger:  $\leq 50$  years, middle-age: 51 to 74 years, elderly:  $\geq 75$  years). Baseline characteristics, hospital course, as well as short- and long-term mortality were compared among groups.

**RESULTS** Of 2,098 TTS patients, 242 (11.5%) patients were  $\leq 50$  years of age, 1,194 (56.9%) were 51 to 74 years of age, and 662 (31.6%) were  $\geq 75$  years of age. Younger patients were more often men (12.4% vs. 10.9% vs. 6.3%;  $p = 0.002$ ) and had an increased prevalence of acute neurological (16.3% vs. 8.4% vs. 8.8%;  $p = 0.001$ ) or psychiatric disorders (14.1% vs. 10.3% vs. 5.6%;  $p < 0.001$ ) compared with middle-aged and elderly TTS patients. Furthermore, younger patients had more often cardiogenic shock (15.3% vs. 9.1% vs. 8.1%;  $p = 0.004$ ) and had a numerically higher in-hospital mortality (6.6% vs. 3.6% vs. 5.1%;  $p = 0.07$ ). At multivariable analysis, younger (odds ratio: 1.60; 95% confidence interval: 0.86 to 3.01;  $p = 0.14$ ) and older age (odds ratio: 1.09; 95% confidence interval: 0.66 to 1.80;  $p = 0.75$ ) were not independently associated with in-hospital mortality using the middle-aged group as a reference. There were no differences in 60-day mortality rates among groups.

**CONCLUSIONS** A substantial proportion of TTS patients are younger than 50 years of age. TTS is associated with severe complications requiring intensive care, particularly in younger patients. (J Am Coll Cardiol 2020;75:1869-77)  
© 2020 by the American College of Cardiology Foundation.

Hamburg/Kiel/Luebeck, Hamburg, Germany; <sup>x</sup>Deutsches Herzzentrum München, Technische Universität München, Munich, Germany; <sup>y</sup>DZHK (German Centre for Cardiovascular Research), partner site Munich Heart Alliance, Munich, Germany; <sup>z</sup>Department of Internal Medicine II-Cardiology, University of Ulm, Medical Center, Ulm, Germany; <sup>aa</sup>Service de cardiologie, Hôpitaux Universitaires de Genève, Geneva, Switzerland; <sup>bb</sup>Department of Cardiology, John Radcliffe Hospital, Oxford University Hospitals, Oxford, United Kingdom; <sup>cc</sup>Department of Internal Medicine, Cardiology and Angiology, Magdeburg University, Magdeburg, Germany; <sup>dd</sup>Department of Cardiology, Kantonsspital Lucerne, Lucerne, Switzerland; <sup>ee</sup>Department of Cardiology, Kantonsspital Winterthur, Winterthur, Switzerland; <sup>ff</sup>Heart Center, Turku University Hospital and University of Turku, Turku, Finland; <sup>gg</sup>Department of Cardiology and Angiology, Hannover Medical School, Hannover, Germany; <sup>hh</sup>Department of Cardiology, King's College Hospital, London, United Kingdom; <sup>ii</sup>Department of Cardiology, University Hospital Basel, Basel, Switzerland; <sup>jj</sup>Fondazione Policlinico Universitario A. Gemelli IRCCS, Università Cattolica del Sacro Cuore, Rome, Italy; <sup>kk</sup>Department of Cardiology, Christchurch Hospital, Christchurch, New Zealand; <sup>ll</sup>Department of Cardiology and Internal Medicine B, University Medicine Greifswald, Greifswald, Germany; <sup>mm</sup>DZHK (German Centre for Cardiovascular Research), partner site Greifswald, Greifswald, Germany; <sup>nn</sup>Department of Cardiology and Cardiac Imaging Center, University Hospital of Rangueil, Toulouse, France; <sup>oo</sup>Intensive Coronary Care Unit, Moscow City Hospital #1 named after N. Pirogov, Moscow, Russia; <sup>pp</sup>First Department of Medicine, Faculty of Medicine, University Medical Centre Mannheim (UMM) University of Heidelberg, Mannheim, Germany; <sup>qq</sup>DZHK (German Center for Cardiovascular Research), partner site, Heidelberg-Mannheim, Mannheim, Germany; <sup>rr</sup>Cardiocenter, Third Faculty of Medicine, Charles University in Prague and University Hospital Královské Vinohrady, Prague, Czech Republic; <sup>ss</sup>Division of Cardiovascular Medicine, Department of Medicine, College of Medicine, University of Florida, Gainesville, Florida; <sup>tt</sup>Department of Internal Medicine I - Cardiology, University Hospital Olomouc, Olomouc, Czech Republic; <sup>uu</sup>Klinik für Innere Medizin III, Universitätsklinikum des Saarlandes, Homburg/Saar, Germany; <sup>vv</sup>Advanced Heart Failure and Transplantation Center, University Medical Center Ljubljana, Ljubljana, Slovenia; <sup>ww</sup>Santa Maria University Hospital, CHULN, Center of Cardiology of the University of Lisbon, Lisbon School of Medicine, Lisbon Academic Medical Center, Lisboa, Portugal; <sup>xx</sup>Klinik und Poliklinik für Innere Medizin II, Universitätsklinikum Regensburg, Regensburg, Germany; <sup>yy</sup>Local Health Unit n.8, Cardiology Unit, Arzignano, Vicenza, Italy; <sup>zz</sup>Department of Cardiovascular Medicine, Chiba University Graduate School of Medicine, Chiba, Japan; <sup>aaa</sup>Department of Cardiology, Chiba Emergency Medical Center, Chiba, Japan; <sup>bbb</sup>Division of Cardiology, Kimitsu Central Hospital, Kisarazu, Japan; <sup>ccc</sup>Dorset Heart Centre, Royal Bournemouth Hospital, Bournemouth, United Kingdom; <sup>ddd</sup>Department of Cardiovascular Diseases, Mayo Clinic, Rochester, Minnesota; <sup>eee</sup>Division of Cardiology, Heart and Vascular Center, University of Iowa, Iowa City, Iowa; <sup>fff</sup>Department of Internal Medicine I, University Hospital Jena, Friedrich-Schiller-University Jena, Jena, Germany; <sup>ggg</sup>Division of Cardiology, A.O.U San Luigi Gonzaga, Orbassano, Turin, Italy; <sup>hhh</sup>Department of Cardiology, Kantonsspital St. Gallen, St. Gallen, Switzerland; <sup>iii</sup>Department of Cardiology, Centro Hospitalar Universitário de São João, E.P.E., Porto, Portugal; <sup>jjj</sup>Department of Cardiology, Basil Hetzel Institute, Queen Elizabeth Hospital, University of Adelaide, Adelaide, South Australia, Australia; <sup>kkk</sup>DZHK (German Center for Cardiovascular Research), partner site Berlin, Berlin Institute of Health (BIH), Berlin, Germany; <sup>lll</sup>Heart Center Leipzig - University Hospital, Department of Internal Medicine/Cardiology, Leipzig, Germany; <sup>mmm</sup>Structural Interventional Cardiology, Careggi University Hospital, Florence, Italy; <sup>nnn</sup>Department of Cardiology, Leiden University Medical Centre, Leiden, the Netherlands; <sup>ooo</sup>Center for Molecular Cardiology, Schlieren Campus, University of Zurich, Zurich, Switzerland; and the <sup>ppp</sup>Royal Brompton and Harefield Hospitals Trust and Imperial College, London, United Kingdom. \*Drs. Cammann,

**T**akotsubo syndrome (TTS) is an important differential diagnosis in patients presenting with acute chest pain and/or acute heart failure (1,2). TTS is characterized by typical left ventricular (LV) wall motion abnormalities and elevated cardiac biomarkers, and it affects predominantly post-menopausal women (3). However, given the growing awareness of the disease entity, TTS is increasingly recognized also in younger and male patients (3-5).

SEE PAGE 1878

In general, age is regarded as one of the most important cardiovascular risk factors associated with worse outcomes in patients with acute myocardial infarction, atrial fibrillation, and heart failure among others conditions (6-8). Age-related differences in the clinical profile of TTS patients have been suggested in smaller studies (9,10), but data remain conflicting. Whether younger TTS patients exhibit a different disease phenotype has not yet been fully investigated, and age-related differences in the presentation and outcomes of TTS remain uncertain.

The present study therefore aimed to examine age-related clinical features and outcomes of TTS patients enrolled in the International Takotsubo Registry (InterTAK Registry).

## METHODS

**STUDY DESIGN.** The design and rationale of the InterTAK Registry have previously been described (11). For the present study, data were collected from 2011 to 2017 from patients who were diagnosed with TTS at 36 participating sites in 11 countries (Australia, Austria, Czech Republic, Finland, France, Germany,

Italy, Poland, Switzerland, United Kingdom, and United States) between 1998 and 2017. Diagnosis of TTS was based on modified Mayo Clinic Diagnostic Criteria (12): 1) transient LV wall motion abnormalities beyond a single epicardial coronary artery distribution territory; 2) absence of obstructive coronary artery disease or acute plaque rupture; 3) evidence of new electrocardiographic abnormalities and/or elevation in cardiac troponin levels; and 4) absence of myocarditis. Exceptions to these criteria were (3): patients who matched all other criteria but had wall motion abnormalities corresponding to the territory of a single coronary artery, patients who had coronary artery disease that could not explain the wall motion abnormality, as well as those who died during the acute phase prior to complete LV wall motion recovery. Data on demographics, triggering factors, laboratory profile, imaging studies, acute cardiac care treatment, and in-hospital complications were collected. Follow-up information was gathered through personal telephone interviews, clinical visits, or medical records. Follow-up time was defined as the time from date of TTS diagnosis to the date of death or last contact. If the last contact was on the discharge date, it was assumed that these patients survived until 60 days. This is assumable as patients were only discharged if they had recovered from the acute TTS episode.

All patients were stratified according to age at index event and categorized into 3 age groups (younger:  $\leq 50$  years, middle-age: 51 to 74 years, and older:  $\geq 75$  years). Clinical characteristics, hospital course, as well as short- and long-term mortality were compared between groups and factors associated with in-hospital mortality were assessed.

## ABBREVIATIONS AND ACRONYMS

**CI** = confidence interval  
**LV** = left ventricular/ventricle  
**OR** = odds ratio  
**TTS** = Takotsubo syndrome  
**ULN** = upper limit of the normal range

Szawan, Opolski, and Templin contributed equally to this work. The InterTAK Registry is supported by The Biss Davies Charitable Trust. Dr. Karakas has received grant support outside of this work from Vifor Pharma, Adreomed AG, and Abbott Diagnostics; and has received honoraria outside of this work from Vifor Pharma, Amgen, Adrenomed AG, Sanofi, and AstraZeneca. Dr. Noutsias has been a consultant to the IKDT (Institute for Cardiac Diagnosis and Therapy GmbH, Berlin); and has received honoraria for presentations and/or participated in Advisory Boards from Abbott, Abiomed, AstraZeneca, Bayer, Boehringer Ingelheim, Bristol-Myers Squibb, Fresenius, Miltenyi Biotec, Novartis, Pfizer, Roche, and Zoll. Dr. Napp has received lecture, consulting, and proctoring honoraria and travel support from Abiomed; has received lecture honoraria from Maquet; has received travel support, lecture honoraria, consulting fees, and research funding from Cytosorbents; and has received consultant fees and travel support from Bayer. Dr. Din has received honoraria from AstraZeneca. Dr. Templin has been supported by the H.H. Sheikh Khalifa bin Hamad Al-Thani Research Programme. Dr. Maier has been supported by EU HORIZON 2020 (SILICOFCM ID777204). Dr. Böhm has served as a scientific advisor for and received lecture fees from Amgen, Bayer, Servier, Medtronic, Boehringer Ingelheim, Vifor, Bristol-Myers Squibb, AstraZeneca, Novartis, and Abbott. Dr. Hasenfuß has received honorarium for lectures from AstraZeneca, Berlin Chemie, Impulse Dynamics, Novartis, Servier, and Vifor Pharma; has served as a consultant for Corvia, Impulse Dynamics, Novartis, Servier, and Vifor Pharma; has served as co-principal investigator for Impulse Dynamics; and has served on the Editorial Board of Springer. Dr. Pieske has served as a steering committee member for Novartis, Bayer Healthcare, and Merck; has served as a speaker for Bayer Healthcare, Merck, Bristol-Myers Squibb, and Servier; has received lecture fees from Medscape; and has served as a Steering Committee Member for Servier. All other authors have reported that they have no relationships relevant to the contents of this paper to disclose.

**STATISTICAL ANALYSIS.** Categorical variables are presented as numbers and percentages, and continuous variables as mean  $\pm$  SD or median (interquartile range). Comparisons of categorical variables were conducted with the Pearson chi-square test and continuous variables were analyzed with 1-way analysis of variance and Kruskal-Wallis test. Baseline variables with significant differences between groups and that were likely to have an impact on in-hospital mortality were included in the multivariable logistic regression model to assess the adjusted risk of younger and older age using the middle-aged group as a reference. Prior to multivariable analysis, multiple imputation for missing data was performed. Odds ratios (ORs) are presented with the respective 95% confidence intervals (CIs). Kaplan-Meier estimates were used to analyze all-cause mortality, and the log-rank test was executed for group comparisons. Furthermore, a landmark analysis with a landmark set at 60 days was conducted to investigate long-term mortality beyond the acute phase. To assess age-related parameters affecting in-hospital mortality decision tree algorithms with Classification And Regression Trees and exhausted Chi-squared Automatic Interaction Detector were used. All tests were 2-sided and a  $p$  value  $<0.05$  was considered statistically significant. R version 3.5 (R Foundation, Vienna, Austria) and SPSS version 26.0 (IBM Corp., Armonk, New York) were used for statistical analyses, and Prism 8 (GraphPad, La Jolla, California) for figure preparation.

## RESULTS

**CLINICAL CHARACTERISTICS.** Of the 2,098 TTS patients included, 242 (11.5%) patients were  $\leq 50$  years of age, 1,194 (56.9%) were 51 to 74 years of age, and 662 (31.6%) were  $\geq 75$  years of age. Mean age of the patients was  $66.9 \pm 12.8$  years (90.4% women), and there was no statistical difference in age ( $p = 0.53$ ) and sex ( $p = 0.66$ ) distribution when analyzing each year of TTS diagnosis. The prevalence of men was highest among younger TTS patients (age  $\leq 50$  years: 12.4%, 51 to 74 years: 10.9%, and  $\geq 75$  years: 6.3%;  $p = 0.002$ ). Baseline comparisons between age groups are detailed in [Table 1](#).

Older TTS patients had no evident triggering event more often (21.9% vs. 26.7% vs. 29.9%;  $p = 0.049$ ), whereas middle-aged patients presented with an emotional trigger more frequently (28.9% vs. 32.0% vs. 25.7%;  $p = 0.017$ ). The prevalence of physical triggers did not differ among groups (40.9% vs. 34.8% vs. 36.7%;  $p = 0.19$ ). Younger TTS patients displayed acute neurological disorders more often, including

seizures, intracranial hemorrhages, and migraine attacks or headache disorders (16.3%, vs. 8.4% vs. 8.8%;  $p = 0.001$ ). The prevalence of psychiatric disorders, particularly affective and adjustment disorders, was higher in younger patients compared with middle-aged and elderly TTS patients (14.1% vs. 10.3% vs. 5.6%;  $p < 0.001$ ).

Younger patients had higher troponin levels at admission (as expressed as x-fold increase above the upper limit of normal [ULN]) than middle-aged or elderly TTS patients (9.50 [interquartile range (IQR): 2.38 to 30.83] vs. 7.50 [IQR: 2.50 to 19.29] vs. 9.23 [IQR: 3.00 to 26.80];  $p = 0.017$ ). Similarly, creatine kinase values at admission were increased in younger TTS patients (1.03 [IQR: 0.54 to 2.19] vs. 0.87 [IQR: 0.56 to 1.41] vs. 0.86 [IQR: 0.51 to 1.44];  $p = 0.049$ ). There were no significant differences in brain natriuretic peptide values among groups. C-reactive protein levels at admission were higher in elderly TTS patients compared with younger and middle-aged TTS patients (3.85 [IQR: 1.00 to 11.38] vs. 3.75 [IQR: 1.38 to 11.05] vs. 5.00 [IQR: 2.00 to 17.20];  $p = 0.006$ ).

Elderly TTS patients more often presented with atrial fibrillation compared with younger or middle-aged TTS patients (2.4% vs. 4.5% vs. 11.4%;  $p < 0.001$ ) and more frequently presented with ST-segment elevation (37.3% vs. 40.1% vs. 50.3%;  $p < 0.001$ ). The prevalence of ST-segment depression, T-wave inversion, and QTc prolongation did not differ among groups.

Younger TTS patients had a higher heart rate ( $91.5 \pm 24.9$  beats/min vs.  $87.8 \pm 21.6$  beats/min vs.  $85.9 \pm 19.8$  beats/min;  $p = 0.009$ ) and a lower systolic blood pressure ( $125.1 \pm 28.9$  mm Hg vs.  $131.2 \pm 28.8$  mm Hg vs.  $132.0 \pm 29.0$  mm Hg,  $p = 0.012$ ) at presentation as compared to middle-aged and elderly TTS patients. No significant difference in LV ejection fraction was observed among groups ( $40.2 \pm 12.4\%$  vs.  $41.0 \pm 11.7\%$  vs.  $40.5 \pm 11.2\%$ ;  $p = 0.59$ ). The typical form of TTS was less often observed in younger and middle-aged TTS patients (66.5% vs. 67.9% vs. 79.3%;  $p < 0.001$ ) compared with older TTS patients.

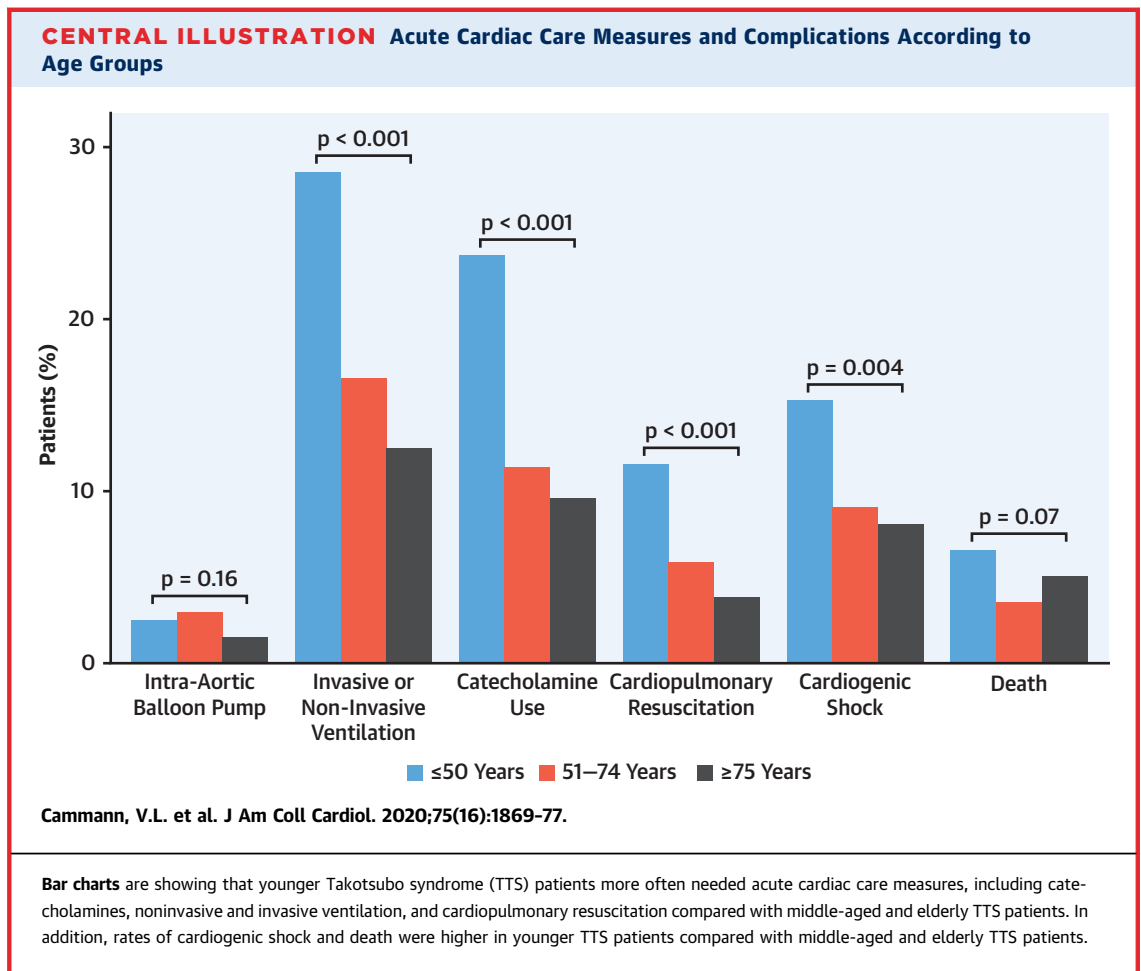
Younger TTS patients more frequently needed acute cardiac care measures including catecholamines (23.7% vs. 11.4% vs. 9.6%;  $p < 0.001$ ), noninvasive and invasive ventilation (28.6% vs. 16.6% vs. 12.5%;  $p < 0.001$ ), and/or cardiopulmonary resuscitation (11.6% vs. 5.9% vs. 3.9%;  $p < 0.001$ ). The prevalence of cardiogenic shock was higher in younger TTS patients (15.3%, vs. 9.1% vs. 8.1%;  $p = 0.004$ ), with numerically higher rates of in-hospital mortality observed in younger and older patients (6.6% vs. 3.6% vs. 5.1%;  $p = 0.07$ ) ([Central Illustration](#)).

**TABLE 1 Characteristics of Takotsubo Patients According to Age Groups**

	Age			p Value
	≤50 Years n = 242 (11.5%)	51-74 Years n = 1,194 (56.9%)	≥75 Years n = 662 (31.6%)	
<b>Demographics</b>				
Male	30/242 (12.4)	130/1,194 (10.9)	42/662 (6.3)	0.002
<b>Triggers</b>				
Physical	99/242 (40.9)	416/1,194 (34.8)	243/662 (36.7)	0.19
Emotional	70/242 (28.9)	382/1,194 (32.0)	170/662 (25.7)	0.017
No evident trigger	53/242 (21.9)	319/1,194 (26.7)	198/662 (29.9)	0.049
<b>Acute neurological disorders</b>				
Seizure	14/221 (6.3)	38/1,067 (3.6)	8/593 (1.3)	0.001
Intracranial bleeding	15/221 (6.8)	17/1,067 (1.6)	12/593 (2.0)	<0.001
Stroke or TIA	2/221 (0.9)	22/1,067 (2.1)	20/593 (3.4)	0.08
Migraine or headache disorder	12/221 (5.4)	12/1,067 (1.1)	9/593 (1.5)	<0.001
Others	6/221 (2.7)	14/1,067 (1.3)	6/593 (1.0)	0.17
<b>Acute psychiatric disorders</b>				
Affective disorder	10/220 (4.5)	37/1,066 (3.5)	9/592 (1.5)	0.029
Anxiety disorder	6/220 (2.7)	18/1,066 (1.7)	5/592 (0.8)	0.13
Reaction to severe stress or adjustment disorder	10/220 (4.5)	38/1,066 (3.6)	6/592 (1.0)	0.003
Others	8/220 (3.6)	38/1,066 (3.6)	14/592 (2.4)	0.38
<b>Laboratory profile on admission</b>				
Troponin, factor increase in ULN*	9.50 (2.38-30.83) (175)	7.50 (2.50-19.29) (923)	9.23 (3.00-26.80) (501)	0.017
Creatine kinase, factor increase in ULN	1.03 (0.54-2.19) (157)	0.87 (0.56-1.41) (787)	0.86 (0.51-1.44) (450)	0.049
BNP, factor increase in ULN†	4.95 (1.07-18.52) (56)	6.22 (2.08-17.50) (322)	6.50 (2.74-16.22) (171)	0.29
CRP, mg/l	3.85 (1.00-11.38) (134)	3.75 (1.38-11.05) (738)	5.00 (2.00-17.20) (426)	0.006
<b>ECG on admission</b>				
Atrial fibrillation	5/209 (2.4)	47/1,047 (4.5)	67/589 (11.4)	<0.001
ST-segment elevation	78/209 (37.3)	420/1,047 (40.1)	296/589 (50.3)	<0.001
T-wave inversion	75/209 (35.9)	442/1,047 (42.2)	248/589 (42.1)	0.22
QTc, ms	457.4 ± 45.5 (161)	458.1 ± 47.0 (833)	461.3 ± 50.3 (432)	0.48
<b>TTS type and hemodynamic findings</b>				
Apical	161/242 (66.5)	811/1,194 (67.9)	525/662 (79.3)	<0.001
Heart rate, beats/min	91.5 ± 24.9 (191)	87.8 ± 21.6 (914)	85.9 ± 19.8 (513)	0.009
Systolic blood pressure, mm Hg	125.1 ± 28.9 (197)	131.2 ± 28.8 (936)	132.0 ± 29.0 (517)	0.012
Left ventricular ejection fraction, %‡	40.2 ± 12.4 (212)	41.0 ± 11.7 (1,057)	40.5 ± 11.2 (582)	0.59
<b>Cardiovascular risk factors</b>				
Hypertension	87/231 (37.7)	738/1,166 (63.3)	515/645 (79.8)	<0.001
Diabetes mellitus	19/231 (8.2)	185/1,169 (15.8)	108/639 (16.9)	0.005
Current smoking	79/225 (35.1)	262/1,121 (23.4)	52/617 (8.4)	<0.001
Hypercholesterolemia	40/227 (17.6)	408/1,148 (35.5)	210/634 (33.1)	<0.001
<b>Comorbidities</b>				
COPD or asthma	24/229 (10.5)	217/1,149 (18.9)	98/634 (15.5)	0.004
Cancer	19/211 (9.0)	175/1,102 (15.9)	112/582 (19.2)	0.002
Hyperthyroidism	9/227 (4.0)	58/1,161 (5.0)	40/636 (6.3)	0.32
Hypothyroidism	22/227 (9.7)	151/1,161 (13.0)	83/636 (13.1)	0.36

Values are n/N (%), median (interquartile range) (n), or mean ± SD (n). \*Including upper limits of the normal range for troponin T, high-sensitivity troponin T, and troponin I. †Including upper limits of the normal range for brain natriuretic peptide and the N-terminal of prohormone brain natriuretic peptide. ‡Data obtained during catheterization or echocardiography; if both results were available, data from catheterization were used.  
 BNP = brain natriuretic peptide; COPD = chronic obstructive pulmonary disease; CRP = C-reactive protein; ECG = electrocardiogram; QTc = QT interval corrected for heart rate; TIA = transient ischemic attack; TTS = Takotsubo syndrome; ULN = upper limit of the normal.

At multivariable logistic regression analysis, younger (OR: 1.60; 95% CI: 0.86 to 3.01; p = 0.14) and older age (OR: 1.09; 95% CI: 0.66 to 1.80; p = 0.75) were not independently associated with in-hospital mortality using the middle-aged group as a reference; while male sex (OR: 2.18; 95% CI: 1.26 to 3.77; p = 0.005), atrial fibrillation (OR: 5.33; 95% CI: 3.00 to 9.48; p < 0.001), first troponin >10 × ULN (OR: 1.62; 95% CI: 1.01 to 2.61; p = 0.047), and acute neurological disorders (OR: 3.03; 95% CI: 1.79 to 5.16;



$p < 0.001$ ) were factors associated with in-hospital mortality (Figure 1).

Decision tree analysis demonstrated that physical stress is the most important parameter for in-hospital death in younger and middle-aged TTS patients, while atrial fibrillation emerged as the most important prognostic factor for elderly TTS patients (Supplemental Figure 1). Kaplan-Meier survival analysis revealed no statistically significant differences between the different age groups within the first 60 days after TTS (Figure 2). After 60 days, elderly TTS patients had a significantly higher mortality compared with younger and middle-aged TTS patients ( $p < 0.001$ ) (Supplemental Figure 2).

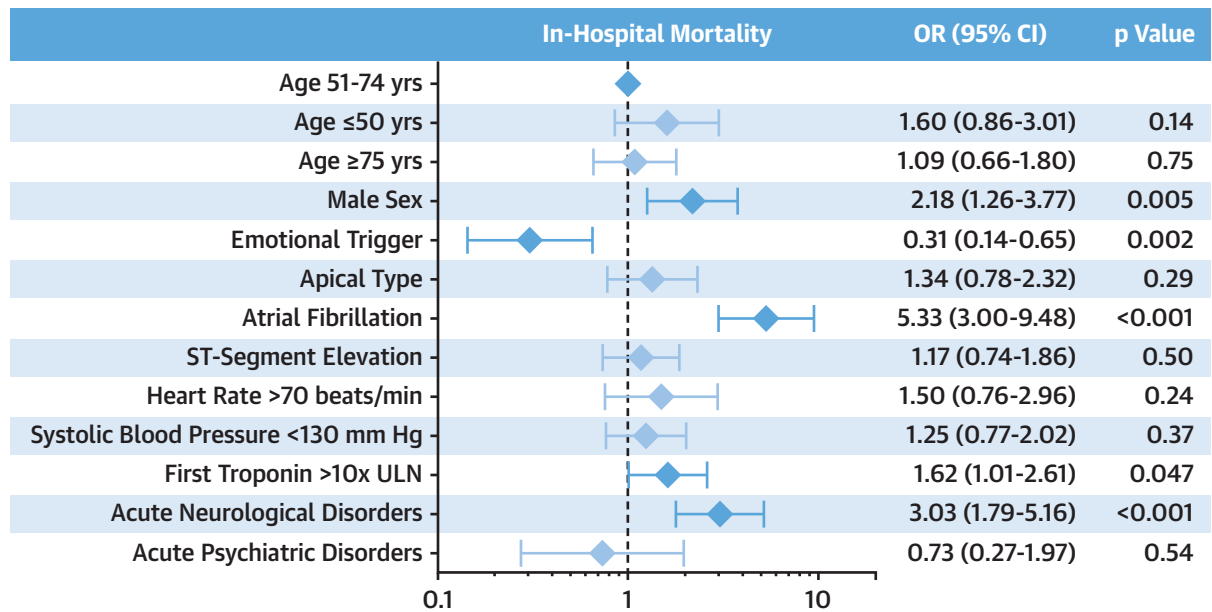
## DISCUSSION

This study based on the InterTAK Registry provides comprehensive data on age-related characteristics and outcomes of patients diagnosed with TTS. The main findings of the study are: 1) patients  $\leq 50$  years of age accounted for about 10% of TTS patients and

presented with atypical TTS forms more often; 2) younger TTS patients had an increased prevalence of coexisting acute neurological and/or psychiatric disorders; 3) younger TTS patients presented with cardiogenic shock and had an increased need for acute cardiac care treatment more often; and 4) younger and older age were not independently associated with in-hospital mortality.

Although TTS is known to characteristically affect post-menopausal women, a substantial proportion of patients experiencing TTS are below 50 years of age. Giving the increased awareness of the disease, it could be hypothesized that younger and male patients were diagnosed more frequently in more recent years. However, when analyzing age and sex distribution over the entire study period, we could not confirm this assumption. Interestingly, the prevalence of male patients increased with decreasing age and was highest in younger patients. These findings are in line with a prior study that suggested males are younger at the time of index event (13). The pathophysiological mechanisms underlying this observation are

**FIGURE 1** Multivariable Logistic Regression Analysis for In-Hospital Mortality

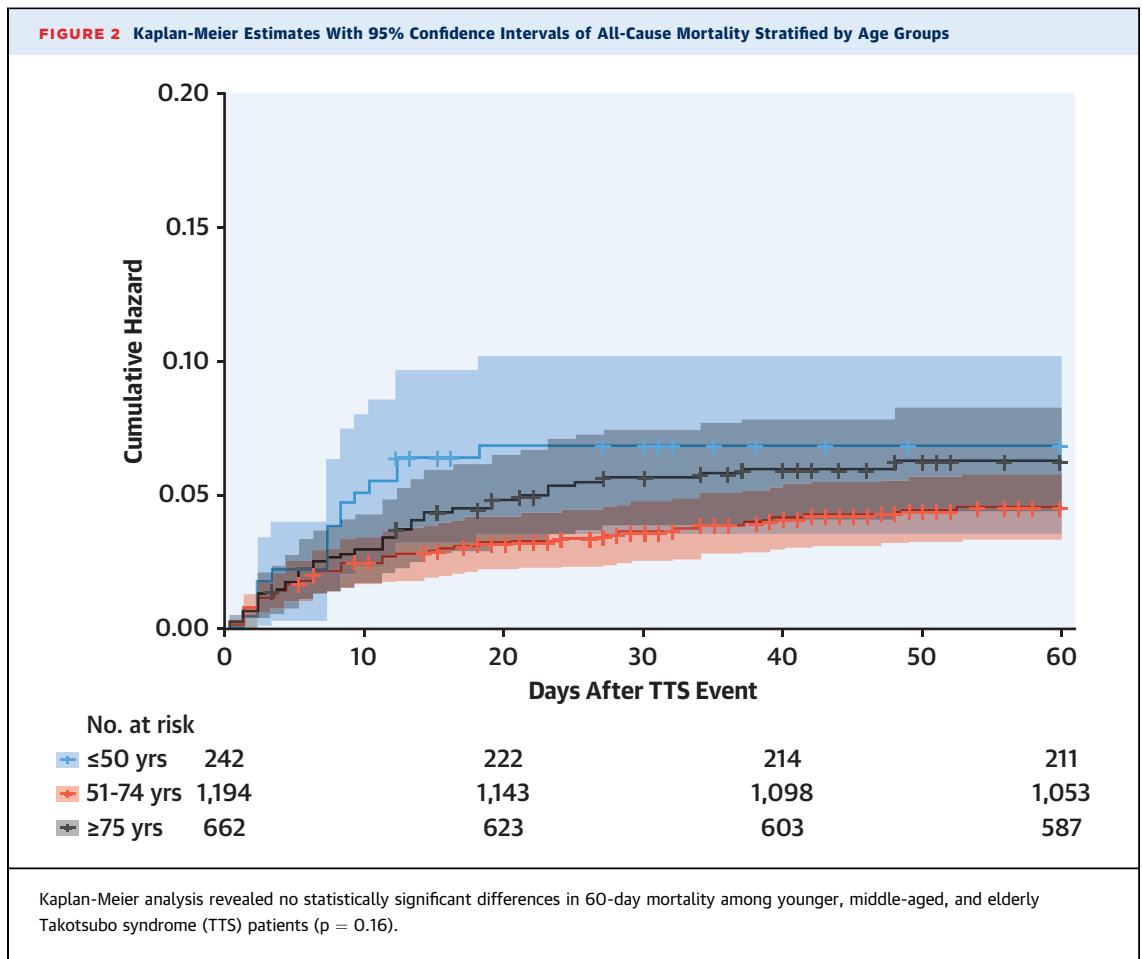


Male sex, atrial fibrillation, first troponin >10× ULN, and acute neurological disorders emerged as factors associated with in-hospital mortality, whereas younger and older age was not associated with in-hospital mortality when using the middle-aged group as a reference. **Error bars** indicate 95% confidence intervals. **Blue** indicates statistically significant variables, while **light blue** is not significant. CI = confidence interval; OR = odds ratio; ULN = upper limit of the normal range.

unknown. Sympathetic stimulation and alterations in the autonomic nervous system are considered to be involved in the pathogenesis of TTS (14-16), and age-related changes in sympathetic stimulation or myocardial susceptibility to catecholamine excess may exist. Indeed, younger patients had higher heart rates, reflecting more extensive sympathetic activation. Given that estrogen exerts a sympatholytic effect by altering β-adrenergic receptor signaling (17), it has been suggested that estrogen depletion following menopause may play a causative role in the pathology of TTS, putting post-menopausal women at particularly high risk (18-20). However, data on the role of estrogen in TTS remain conflicting (21), and cardioprotective endogenous estrogen effects seem to not be sufficient to prevent TTS in a substantial number of younger pre-menopausal women as indicated by the increased heart rate. Particularly in younger patients, the type and severity of the triggering event may predominantly be involved in the development of TTS, as the prevalence of triggering events was higher in younger as compared to middle-aged and elderly patients. Which pathophysiological pathways are predominantly involved in men and women of different age groups remains to be clarified, along with the role of genetic susceptibility in TTS (22).

Most interestingly, the prevalence of atypical TTS was higher in younger patients. It may therefore be speculated that myocardial susceptibility to triggering factors as well as protective defense mechanisms may vary according to age, and these alterations in turn may result in distinct and age-related variants of wall motion abnormalities and disease severity in TTS patients. Alternatively, the activation of midbrain structures and in turn the topical activation of specific nerve fibers may differ with age. Whether and to what extent age- and sex-related changes in sympathetic activity of the left ventricular apex determine the course of the disease remains to be elucidated (23).

Both neurological and psychiatric disorders are known predisposing factors for TTS (3,24,25). Interestingly, the prevalence of acute neurological disorders was significantly higher in younger patients compared with middle-aged and elderly TTS patients. Rates were mainly driven by an increased prevalence of seizures, intracranial bleedings, and migraine attacks or headache disorders. Considering the prevalence of migraine attacks is highest in middle-aged persons in the general population and that intracranial bleedings mainly occur with advanced age (26,27), this observation is of particular importance.



Similarly, acute psychiatric disorders, particularly affective and adjustment disorders, were more prevalent among younger TTS patients. Whether age-related nervous system or myocardial alterations affect the patient's susceptibility to distinct triggering factors is unknown.

The prevalence of cardiogenic shock and the need for intensive cardiac care treatment including catecholamine use and noninvasive and invasive ventilation was particularly high in younger TTS patients. These findings are supported by data obtained from a cohort of 114 TTS patients showing trends toward increased rates of mechanical ventilation and catecholamine use in patients  $\leq 65$  years of age (10). Although patients  $\leq 50$  years of age had numerically higher rates of in-hospital mortality compared with middle-aged and elderly patients, this difference did not reach statistical significance and younger age was not independently associated with in-hospital death. Given that male sex and acute neurological disorders emerged as independent predictors of mortality whereas age did not, similar to prior registry data

(13,28,29), it is conceivable that differences in baseline characteristics may at least partially account for the worse in-hospital outcomes in patients  $\leq 50$  years of age.

Long-term outcome analysis revealed that elderly TTS patients had the highest mortality rate compared with younger and middle-aged TTS patients. This finding might be explained by the fact that advanced age itself is a negative prognostic factor and that elderly TTS patients had a higher prevalence of comorbidities and cardiovascular risk factors.

**STUDY LIMITATIONS.** First, this was an in-part retrospective study and therefore, suffers from inherent limitations. Second, the prevalence might be higher, especially in elderly and in males, due to a probability of undiagnosed cases.

## CONCLUSIONS

About 10% of patients experiencing TTS are below 50 years of age and exhibit a distinct clinical profile.



Male sex, atypical type, and acute neurological and/or psychiatric disorders are more common among younger TTS patients. Given the substantially worse in-hospital course, younger TTS patients present as a particularly vulnerable patient subset in need for close monitoring and intensive care.

**ADDRESS FOR CORRESPONDENCE:** Dr. Christian Templin, Acute Cardiac Care, Andreas Grüntzig Heart Catheterization Laboratories, University Hospital Zurich, University Heart Center—Department of Cardiology, Raemistrasse 100, 8091 Zurich, Switzerland. E-mail: [Christian.Templin@usz.ch](mailto:Christian.Templin@usz.ch). Twitter: [@UnispitalUSZ](https://twitter.com/UnispitalUSZ).

## PERSPECTIVES

**COMPETENCY IN MEDICAL KNOWLEDGE:** Approximately 10% of patients with TTS are age <50 years, and there is a higher proportion of men in the younger group than in older patients with TTS. Cardiogenic shock, respiratory failure, catecholamine requirement, and resuscitation were also more frequent in younger than in older patients with TTS.

**TRANSLATIONAL OUTLOOK:** Additional studies are needed to identify characteristics other than age that distinguish various subtypes of TTS that may have bearing upon management and prognosis.

## REFERENCES

1. Ghadri JR, Cammann VL, Jurisic S, et al. A novel clinical score (InterTAK Diagnostic Score) to differentiate takotsubo syndrome from acute coronary syndrome: results from the International Takotsubo Registry. *Eur J Heart Fail* 2017;19:1036–42.
2. Kato K, Lyon AR, Ghadri JR, Templin C. Takotsubo syndrome: aetiology, presentation and treatment. *Heart* 2017;103:1461–9.
3. Templin C, Ghadri JR, Diekmann J, et al. Clinical features and outcomes of takotsubo (stress) cardiomyopathy. *N Engl J Med* 2015;373:929–38.
4. Rozema T, Klein LR. Takotsubo cardiomyopathy: a case report and literature review. *Cardiol Young* 2016;26:406–9.
5. Chinali M, Formigari R, Grutter G. Takotsubo cardiomyopathy in a young adult with transplanted heart: what happened to denervation? *ESC Heart Fail* 2018;5:197–200.
6. Benjamin EJ, Virani SS, Callaway CW, et al. Heart disease and stroke statistics—2018 update: a report from the American Heart Association. *Circulation* 2018;137:e67–492.
7. Stahli BE, Wischnewsky MB, Jakob P, et al. Predictive value of the age, creatinine, and ejection fraction (ACEF) score in patients with acute coronary syndromes. *Int J Cardiol* 2018;270:7–13.
8. Cowie MR, Fox KF, Wood DA, et al. Hospitalization of patients with heart failure: a population-based study. *Eur Heart J* 2002;23:877–85.
9. Citro R, Rigo F, Previtali M, et al. Differences in clinical features and in-hospital outcomes of older adults with tako-tsubo cardiomyopathy. *J Am Geriatr Soc* 2012;60:93–8.
10. Huseynov A, El-Battrawy I, Ansari U, et al. Age related differences and outcome of patients with Takotsubo syndrome. *J Geriatr Cardiol* 2017;14:632–8.
11. Ghadri JR, Cammann VL, Templin C. The International Takotsubo Registry: rationale, design, objectives, and first results. *Heart Fail Clin* 2016;12:597–603.
12. Prasad A, Lerman A, Rihal CS. Apical ballooning syndrome (Tako-Tsubo or stress cardiomyopathy): a mimic of acute myocardial infarction. *Am Heart J* 2008;155:408–17.
13. Murakami T, Yoshikawa T, Maekawa Y, et al. Gender differences in patients with takotsubo cardiomyopathy: multi-center registry from Tokyo CCU Network. *PLoS One* 2015;10:e0136655.
14. Ghadri JR, Wittstein IS, Prasad A, et al. International Expert consensus document on takotsubo syndrome (part I): clinical characteristics, diagnostic criteria, and pathophysiology. *Eur Heart J* 2018;39:2032–46.
15. Kume T, Kawamoto T, Okura H, et al. Local release of catecholamines from the hearts of patients with tako-tsubo-like left ventricular dysfunction. *Circ J* 2008;72:106–8.
16. Hiestand T, Hanggi J, Klein C, et al. Takotsubo syndrome associated with structural brain alterations of the limbic system. *J Am Coll Cardiol* 2018;71:809–11.
17. Cao X, Zhou C, Chong J, et al. Estrogen resisted stress-induced cardiomyopathy through increasing the activity of beta(2)AR-Galphas signal pathway in female rats. *Int J Cardiol* 2015;187:377–86.
18. Kuo BT, Choubey R, Novaro GM. Reduced estrogen in menopause may predispose women to takotsubo cardiomyopathy. *Gend Med* 2010;7:71–7.
19. Ueyama T, Ishikura F, Matsuda A, et al. Chronic estrogen supplementation following ovariectomy improves the emotional stress-induced cardiovascular responses by indirect action on the nervous system and by direct action on the heart. *Circ J* 2007;71:565–73.
20. Sung BH, Ching M, Izzo JL Jr., Dandona P, Wilson MF. Estrogen improves abnormal norepinephrine-induced vasoconstriction in postmenopausal women. *J Hypertens* 1999;17:523–8.
21. Moller C, Stiermaier T, Brabant G, Graf T, Thiele H, Eitel I. Comprehensive assessment of sex hormones in Takotsubo syndrome. *Int J Cardiol* 2018;250:11–5.
22. Pison L, De Vusser P, Mullens W. Apical ballooning in relatives. *Heart* 2004;90:e67.
23. Burger IA, Lohmann C, Messerli M, et al. Age- and sex-dependent changes in sympathetic activity of the left ventricular apex assessed by 18F-DOPA PET imaging. *PLoS One* 2018;13:e0202302.
24. Summers MR, Lennon RJ, Prasad A. Pre-morbid psychiatric and cardiovascular diseases in apical ballooning syndrome (tako-tsubo/stress-induced cardiomyopathy): potential pre-disposing factors? *J Am Coll Cardiol* 2010;55:700–1.
25. Scheitz JF, Mochmann HC, Witzenbichler B, Fiebich JB, Audebert HJ, Nolte CH. Takotsubo cardiomyopathy following ischemic stroke: a cause of troponin elevation. *J Neurol* 2012;259:188–90.
26. Lipton RB, Bigal ME, Diamond M, et al. Migraine prevalence, disease burden, and the need for preventive therapy. *Neurology* 2007;68:343–9.
27. Poon MT, Bell SM, Al-Shahi Salman R. Epidemiology of intracerebral haemorrhage. *Front Neurol Neurosci* 2015;37:1–12.
28. Stiermaier T, Moeller C, Oehler K, et al. Long-term excess mortality in takotsubo cardiomyopathy: predictors, causes and clinical consequences. *Eur J Heart Fail* 2016;18:650–6.
29. Brinjikji W, El-Sayed AM, Salka S. In-hospital mortality among patients with takotsubo cardiomyopathy: a study of the National Inpatient Sample 2008 to 2009. *Am Heart J* 2012;164:215–21.

**KEY WORDS** age, broken heart syndrome, outcome, Takotsubo syndrome

**APPENDIX** For supplemental figures, please see the online version of this paper.